

RETEL
TECHNOLOGIES



proactivesurveillance
videoauditing



PROACTIVE VIDEO AUDITING SOLUTIONS TAILORED FOR:

- Restaurants
- Retailers & Manufacturers
- Commercial/Industrial
- Transportation
- Education
- Municipal Security
- Custom Applications (Please Inquire)

reveal more value from video

ReTel Technologies' proactive surveillance video auditing platform combines the capabilities of a trained audit workforce with the efficiency of cloud-based video processing to deliver next generation surveillance solutions with radical shifts in cost, accuracy and reliability.

Like video analytics, ReTel's solutions can rapidly and cost-effectively process massive amounts of video to discover events and capture data. Yet unlike analytics, ReTel's trained auditors can see things computers can't, and virtually eliminate false alarms for better accuracy and reliability.

Like central station video monitoring, ReTel can put trained sets of eyes on cameras to capture events and data that computers can't. Yet unlike central station video monitoring, ReTel's solutions deliver human monitoring with

efficiency & accuracy unlike any other system

costs that are as much as 94% lower per task, and with advanced workforce management technology that constantly tests and trains auditors and validates their work to ensure accuracy without added cost.

In short, ReTel's surveillance auditing platform is a transformational tool with capabilities that go beyond video analytics, and costs that blow away central monitoring. With ReTel's powerful surveillance auditing solutions, surveillance users can now fully realize the value from the systems they already have. Interested in finding out more about what ReTel can do for you? Read on to learn about the groundbreaking solutions we're creating to instantly expand the capabilities of surveillance systems.

HIGH-VOLUME AUDITING FOR LOSS PREVENTION

- Constant Auditing of EAS Events & Protocol
- Daily Testing of Surveillance Assets For Operation & Consistency
- Ongoing Audits of Security Protocol & Policy Compliance
- High-Frequency Virtual Guard Tours

HIGH-VOLUME AUDITING FOR OPERATIONS

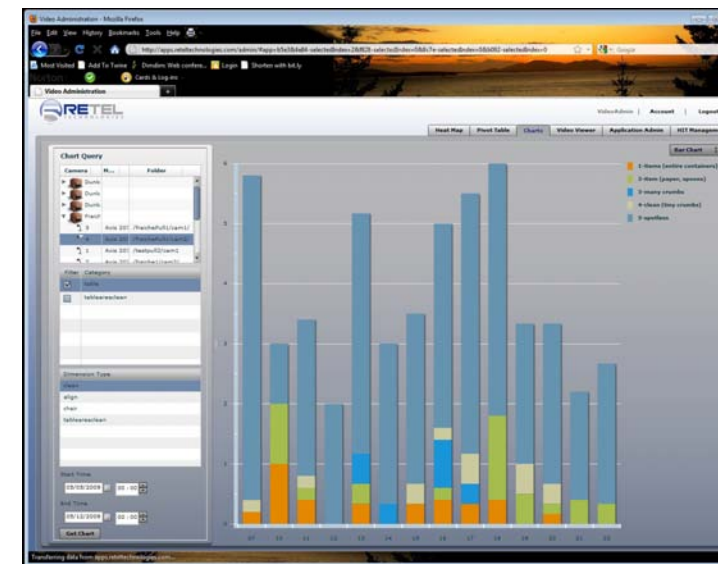
- Constant Auditing of Store Appearance & Cleanliness
- Constant Auditing of Speed of Service
- Constant Auditing of Employee Productivity & Behavior

HIGH-VOLUME AUDITING FOR MARKETING

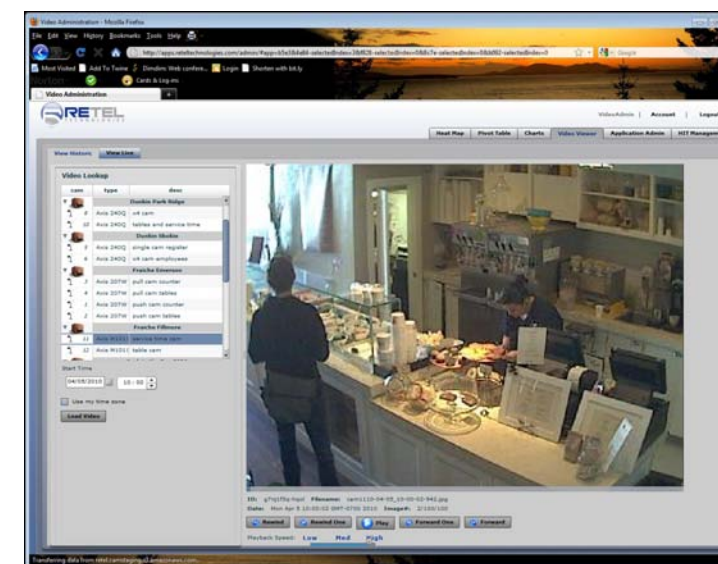
- Ongoing Measurement of Consumer Demographics, Behavior & Merchandise Interaction
- Complete In-Store Sales Funnels (From Browsers to Buyers)

CUSTOM AUDITING APPLICATIONS

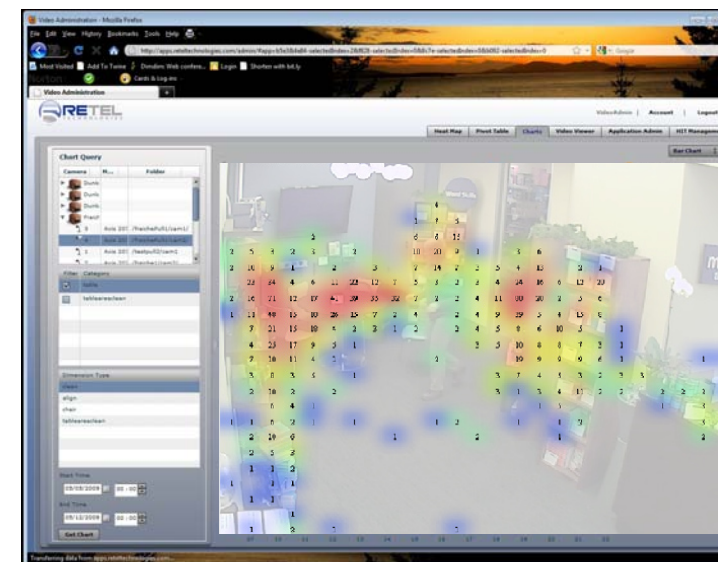
- Defined By You



AT-A-GLANCE TREND REPORTS WITH DIRECT LINKS TO VIDEO



SIMPLE WEB-BASED LIVE & HISTORIC VIDEO VIEWER



RETAIL CONSUMER MERCHANDISE ENGAGEMENT HEAT MAP

SECURE CAPTURE, EFFICIENT PROCESSING, POWERFUL REPORTING

ReTel's powerful surveillance auditing platform has been designed from the ground up to extract, capture and report on the valuable data hidden in surveillance systems as efficiently as possible. Here's how it works:

- 1) ReTel's video management system captures and transmits video streams to encrypted, cloud-based servers. ReTel's process is designed to have minimal impact on available bandwidth.
- 2) ReTel's auditing workforce performs tasks within a proprietary processing platform designed to significantly increase productivity, while constantly training and testing them, and redundantly validating their work.
- 3) ReTel's reporting engine takes the tasks performed by dozens, hundreds or even thousands of auditors and transforms them into critical alerts, powerful at-a-glance trend reports, and consolidated exceptions reports that eliminate the need to search through video to find key information.



MORE INFO ONLINE OR BY PHONE
w: reteltechnologies.com
e: info@reteltech.com
p: 888-777-0407

INFORMATION ABOUT RETEL TECHNOLOGIES

ReTel Technologies, Inc. is an advanced video processing company focused on increasing the quality and capabilities of video surveillance systems.

ReTel's proprietary solutions blend advanced cloud-based video management with flexible, on-demand video auditing workforces to offer previously unavailable services and cost savings to both providers and users of video surveillance.

ReTel Technologies, Inc. was founded in 2007 and is based in San Francisco, California and Chicago, Illinois.

RETEL
TECHNOLOGIES

78 1st Street, Suite 100
San Francisco, CA 94105
USA
p: 888-777-0407
f: 415-737-1356
e: info@reteltech.com
w: reteltechnologies.com